

Newsletter

Vision for Werribee Plains

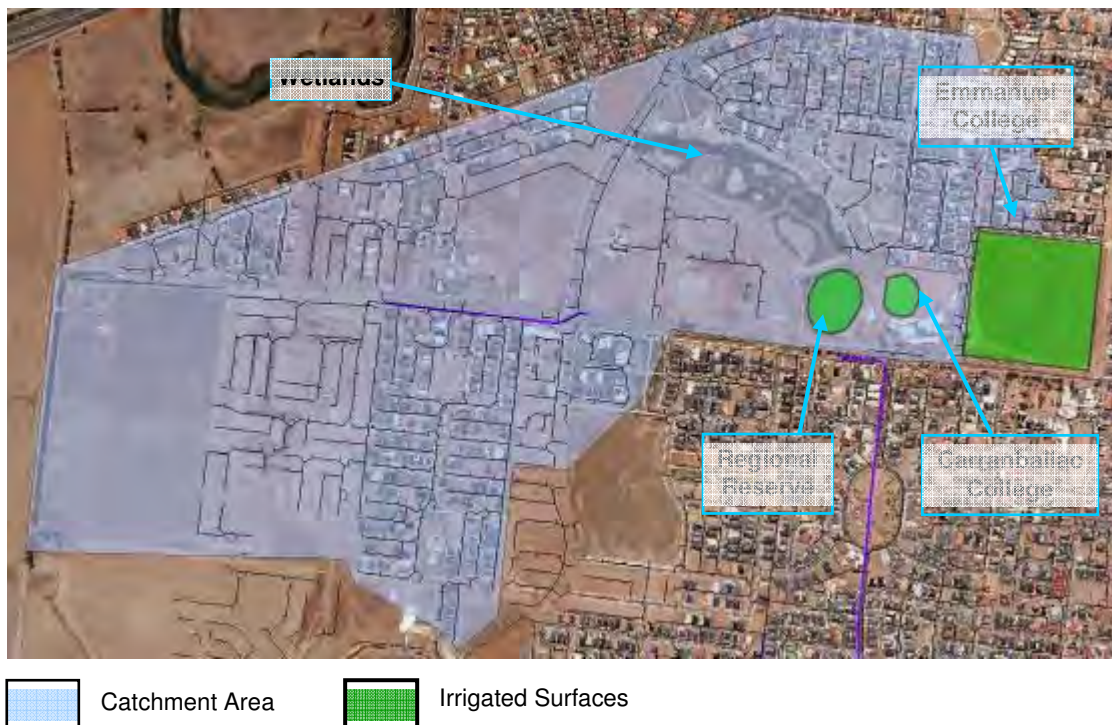
Issue No 6 February 2010

Recycled water projects for Point Cook

Vision for Werribee Plains grants program is matching the funding for two new projects – a recycled water main and a project to harvest storm water - that will deliver water for recreation reserves and ovals at Point Cook.

A new recycled water main that will run along Sneydes Road has received \$625,000 from Vision for Werribee Plains to match the funding provided by City West Water and the City of Wyndham.

A project to harvest stormwater near Carranballac College is part of the City of Wyndham's water security plan and will provide water for four ovals. The project is a joint venture between the Carranballac and Emmanuel Colleges, City West Water and the City of Wyndham and is supported by Vision for Werribee Plains, which has provided \$162,000 to help implement the project.



Trails development – Melton to Wyndham & Altona North

Two new shared cycling and walking trails that are visionary for the region have received funding support to assist in their design and implementation.

A proposed trail along the Werribee River between Melton and Werribee has received \$70,000 to match funds provided by Parks Victoria, Wyndham City Council and the Shire of Melton. The trail is being designed at the same time as new infrastructure for roads, rail, and pipelines are being planned which will help reduce the need for costly retrofitting in the future.



Simon Jolley and Sam Bayley looking down at the proposed site of the Werribee River trail

The Altona North shared trail has received \$20,000 support to match an investment by the City of Hobsons Bay and Parks Victoria. The trail will go along Kororoit Creek between Geelong Road and Barnes Road and will eventually replace the current informal trail. Local residents are keen for the trail to be constructed to provide an alternative to vehicular traffic in an area criss-crossed by numerous major roads and will provide a valuable link for the community and its facilities.



Looking NE across Kororoit Creek to the site of a new shared walking/cycling trail in Altona North

River Revegetation Projects



Werribee Gorge

The Werribee River Gorge project is a major land rehabilitation project on the property known as Ingliston and covers 300 ha and 12km of the river and its tributaries. The project will centre around fencing to exclude livestock, destruction of habitat for rabbits, and revegetation.

The landholder will fence off the area bordering the river, and the Departments of Sustainability and Environment and Primary Industries will oversee an innovative program to rip and destroy over 1,000 rabbit warrens to demonstrate that rabbits need to be controlled to very low numbers to enable the survival of native plants.



Vision for Werribee Plains is contributing \$139,000 to the project's \$600,000 total cost, with Melbourne Water Corporation being the other major contributor of funds. The project will be overseen by the Port Phillip and Westernport Catchment Management Authority's Grow West group. Parks Victoria and Conservation Volunteers Australia who manage properties adjacent to the project area will also provide support.



Werribee Gorge (above left)

Damage to vegetation inflicted by rabbits (centre left)

One of the rabbit warrens (left)

Little River revegetation project

The Little River project, which is being managed by the Brisbane Ranges Landcare Group, will see nearly 12 km of the Little River fenced off from livestock to allow revegetation and to improve the river's water quality.

Vision for Werribee Plains has contributed \$49,000 towards the project. Key stakeholders include Melbourne Water and individual landholders, and will see most of the river fenced off between the Brisbane Ranges Park and the Geelong-Bacchus Marsh Road.



Little River revegetation project – One of the photo points along the river

Reserves Development

Isabella Williams Memorial Reserve

The Isabella Williams Memorial Reserve on the Kororoit Creek is one of five district parks being developed by Brimbank City Council as part of its Creating Better Parks Policy and Plan. Vision for Werribee Plains has provided \$300,000 of the total \$950,000 required for Stage 1 of this project. The project fits within the Kororoit Creek Regional Strategy Plan and will include environmental works, development of shared trails, a new playground, and picnic facilities.

Holden Rd Reserve - Toolernvale

The Holden Road Reserve at Toolernvale will involve further weed removal and revegetation in an upper section of Kororoit Creek – one of the few areas where there is public access to the creek.

The project has been supported by Vision for Werribee Plains with funding of \$14,500 in a \$60,000 project and is being implemented by the Shire of Melton and Toolernvale Landcare Group.



Isabella Williams Memorial Reserve, with Kororoit Creek in the foreground

Regional Sustainability Framework goes to Public Forum

The RSF, a project to set the key indicators for environmental sustainability in the Werribee Plains region, is nearing completion and a community forum is planned for March 23 to discuss the draft final plan.

The Australian Conservation Foundation (ACF) have managed consultancies engaged to develop recommendations for the region covering energy, transport, water, and biodiversity. The results of those studies will be presented at the community forum. Alan Thatcher, Project Officer with the Australian Conservation Foundation, has been tasked with bringing the themes on environmental conservation together in one document.

The ACF will present its recommendations and governance models to the local governments in the region.

If you would like further information on this project, please call Alan Thatcher on (03) 9345 1133, mobile 0417 152 908 or e-mail a.thatcher@acfonline.org.au.

The community forum will be held on March 23 at Victoria University Sunshine campus. To RSVP for this event please call Lisa Olsson on (03) 9742 0414 or e-mail lisa.olsson@dse.vic.gov.au.

Communities in native vegetation

Two community groups will benefit from the latest round of Vision for Werribee Plains funding.

Friends of Iramoo will use their \$26,300 to erect interpretative signage for four urban grassland areas, develop and conduct a range of training programs and develop resources for school programs.

Parks Victoria will develop a Friends group for the new Werribee Regional Park that is soon to be opened. The project received \$40,920 for training and revegetation works. Similar 'Friends' programs at neighbouring properties have attracted extensive support, with Werribee Open Range Zoo attracting more than 150 volunteers and the State Rose Garden attracting over 100.



Looking over the Werribee River estuary toward the new Werribee Regional Park

Feedback

The Vision for Werribee Plains is interested in effective communication. If you have any suggestions that would improve our newsletter, or if you do not wish to receive our newsletter, please email us at:

werribee.plains@dse.vic.gov.au

As always, potential applicants are encouraged to register their interest in a Vision for Werribee Plains grant through an 'Expression of Interest' (EoI). Following receipt of the EoI, applicants will be contacted to arrange an interview to mentor them through the application process.

Applications may be lodged at any time and there will be four times each year when these will be processed. Application closing dates this year are as follows:

Round 7: 3rd May 2010

Round 8: 2nd August 2010

Round 9: 1st November 2010

For further information, and to download the Expression of Interest form go to:

<http://www.ourwater.vic.gov.au/programs/recycling/v4wp/apply>